

Chapter 14

Secondary Polarities

After this civilization's first atom was forcefully split and the first atom bomb was exploded, our sciences predicted that soon we would have an abundance of energy available to replace our diminishing stock of fuel. The failure to achieve this was not because of lack of enthusiasm and drive, but because of a lack of understanding of the laws of Infinity which were in operation long before Earth was, and which cannot be broken without penalty. Throughout the Cosmos the Other Density protects Life of the Electromagnetic Density with strong force stability, and from Infinity outward, including all Life, Infinity's first law for Nature is *Survival*.

As the first law of Nature is that of Survival, the subservient electrical forces of Nature are guarded by Other Density stability, and they cannot be made ineffective by any electrical force. The violent release of heat with the explosion of the atom is a two-density happening. When the stability of the atom is purposely destroyed, the strong Other Density forces rush inward with great pressure at the same time that the electrons and protons discharge in a manner contrary to Natural Law. In this atomic explosion the Law of Survival has been broken and the penalty is apparent. The strongest of all poison to Life on a planet is released to contaminate for thousands of years.

indication that we, as mature adults, are coupled into Cosmic Light, male and female in Gender; and that we are, via this coupling, able to represent the Gender of Cosmic Light and thus know the experience of being secondary creators of Life in form. If we draw an imaginary line between these outcroppings of hair, first from the head to crotch, and then from armpit to armpit, we have our personal 90° cross and the junction of this cross is the area that contains our head, heart, lungs and other most vital organs.

The male body is balanced on the positive side of electrical forces, while the female is balanced on the negative side. Visual evidence of this is that the male's muscular system is slightly quicker biologically and this gives it also more physical power for everyday chores. This quickness is due to the fact that dense Electromagnetic Light which predominates as material balance of the body supplies to the male balance a greater measure of positive force than negative force and thus quicker motion of the body. The female body which in balance taps more of the negative Light with less density and more velocity does not react as quickly as the male body, but the movements are more lithe and lissome and the body is pleasingly rounded. Modern day exhibitions of dance, ice skating, etc., take advantage of this and the stronger male, generally well dressed, helps to display the gracefulness of the female who is appropriately clothed.

A strongly flexible secondary polarity of male and female is the physical shape of the torso which divides at the solar plexus nerve center. When we see an average male and female, both dressed in form-fitting clothing, we quickly note this secondary polarity of the pair. The average male displays broad shoulders and narrow hips while the average female displays more narrow shoulders and broader hips. This difference may seem trivial when we think in Earth terms only; however, when we think of it as secondary polarity, we see that Cosmic Science never goes to the extreme of balance, but calls for a contrast which gives a workable teeter-totter of balanced loads; thus, in this secondary polarity of male and

female, the mass difference of shoulders and hips shows that above the waist the male is female polarity and the female is male polarity; so also, in contrast to this, below the waist the male body is of male positive projective polarity and the female is of female negative receptive polarity. (Fig. 12)



Fig. 12, MALE AND FEMALE FIGURE CONTRASTS

The negative side of us like planet Earth in Sun-Earth relation, manifests material things in abundance. Mother Earth is receptive to the Sun's magnetism and polarization, and she incubates and nurtures things physical. The male's negative polarity is above the waist, and therefore, he builds ships for the seas and air, and all sorts of labor-saving

devices. Because his head is in this polarity he is strongly influenced by physical evidence and his scientific guidelines tend to be strictly empirical. Contrasting this ingoing trait, the male with positive polarity below the waist, not only contains in that polarity the sperm for the female ova, but also the strong urge to deposit it. Thus the outgoing characteristics common to the total male body is secondarily "sex drive" with less discrimination than the female. The female whose personal junction of her cross is also above the waist but in positive polarity is outgoing to society in general. She pursues the intangibles as well as the tangible of social events. With her negative polarity below the waist she supplies her material contribution to this partnership experience by providing the elliptical (pear shaped) womb to nurture new bodies as earth nurtures seeds.

When we point to greater mass in either shoulders or hips as being female balance, we need supporting scientific evidence. Such evidence is supplied in the Feb. 12, 1977, issue of *Science News*. An article entitled "The Courtship of Patchwork Flies" by Julie Ann Miller depicts a fruit fly with one white side and one dark side. The caption below reads, "Sex mosaic fly. The right eye and wing are of female cells and have normal colors. The left eye is male and white, due to a marker gene on the X chromosome. The left wing is male and therefore smaller, and is marked with yellow cuticle." The article tells us that there are hundreds of color combinations of male and female characteristics, but only those with certain male-female balance are attracted to each other strongly enough to attempt copulation. In this writing only the compactness and color of the male and female are considered. The fruit fly tells us in color that the male polarity is associated with white light and the female polarity with ingoing, incubating dark light and that the male biological structure is more compact and thus, to be equal in potential must present a smaller outer appearance. Fig. 13 is our illustration of a greatly enlarged fruit fly that is presented in the article.

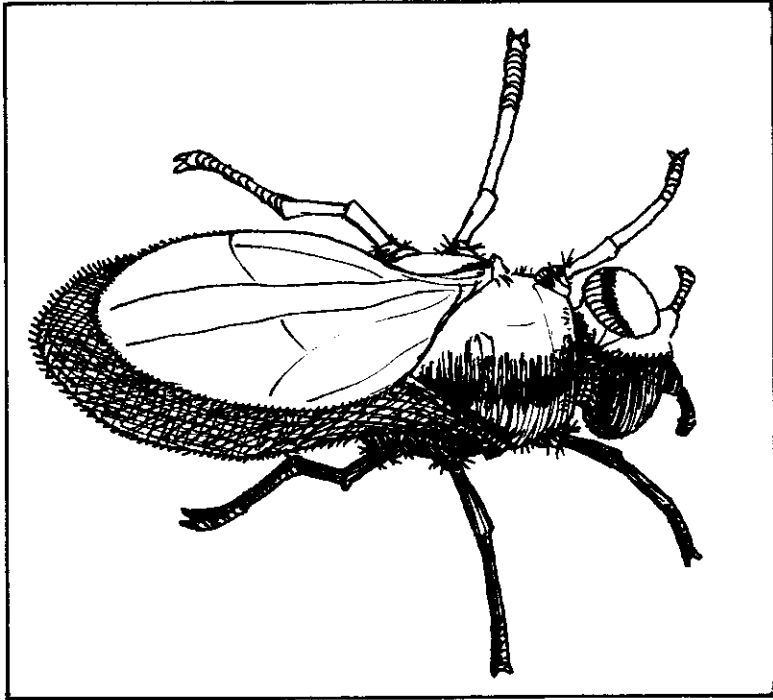


Fig. 13, MOSAIC FLY

There are many less visible secondary polarities throughout our mini-universe body. We have a right and left side to divide our horizontal cross polarity. The left side of the brain relates more to things physical, while the right side relates to things mental and idealistic. Our entire personality and personal interests float between two extremes of the materialism and idealism. Though the materialist of us speaks loudly of physical achievements, the quiet voice of idealism balances it by strong mental fortitude.

Throughout the body, male and female characteristics balance each other to work in harmony in our organs, glands, hormones and enzymes. Activating enzymes elevate the foods

we eat in a positive-negative stepladder effect to a level where they can be a catalyst to Light Forces which then supply power to the body.

The sex act which to empirical thinking is a physical act only, includes the entire scope of the Electromagnetic Density of Living Light. First the mental and physical attraction, then the courtship and touch, build up subtle charges in the contrasting polarity bodies. The physical emotions and activity, intensified by the secondary polarity of the hips and the touch of electrically sensitive sex organs while continually coupled into Electromagnetic Light forces, build up concentrated capacitance charge to overflowing, then consummates in a series of spasmodic pulses which dissipate built-up charge while also discharging both the mental and physical tensions of the whole bodies that are of contrasting gender balance. Because these spasmodic oscillations of charges happen to biological bodies that move slowly, the pulses are slow and deliberate; in electronics similar oscillations happen quickly.

One of the oldest discovered laws of electricity is that of oscillatory discharge. An early Leyden jar when discharged through a wire, was found to oscillate forward and backward from one coating of the jar to the other. If resistance was added to the discharge, the oscillations slowed. When one uses the hand to short circuit a charged condenser of over 100 volts, the oscillations are felt as a rapid pulse. When more body resistance is added the pulse slows down. This tells us that our physical body operates by electronic laws and that electronic laws relate to laws of Electromagnetic Light. What is true of one is true of the other.

In electromagnetic Space there are untold varieties of positive-negative and thus male-female balance. Celestial systems encounter these by moving in and out of them. Our bodies, like a Celestial System are a composite of gender and electrical contrasts, each contrast resembles the positive-negative plates of a battery that is in series.

Evolution for us is constant but contrasting change. Our Earth body is negative balance compared to our permanent body which is positive balance. Evolution then resembles that

of an electron moving through a battery, negative to positive then back to negative, etc., in a chain fashion. This happens to Life in form because it is so in electromagnetic Space. Our planet is finishing an excursion through negative balance Space where things strongly physical were in line and in tune with the nature of Living Space that Earth was negotiating. We are now approaching a more positive and denser area of Space. We might say, "We, on our natural Space Craft, Earth, are leaving the 3rd density and entering the 4th density." The 4th density, being more positive is more compact and thus a quickening influence on our body-mind relations. The evidence of this gradual exit and emergence is apparent in our rapid change in physical and social sciences.

In the early years of the 19th century, people and nations became inspired by changing influence to desire to express more concern for individualism and self-choice. The males and some females working in industry started to demand civil rights and also better working conditions, uniform working hours and fair wages. The female began to demand equal say in affairs of state and home, and woman suffrage came at the same time that labor unions were born. When we note that small nations likewise began to demand equal rights, we must admit that the air of individualism and broader self-choice is world wide. These changes are external to us, Planet Earth and an accompanying large area of space is moving from a negative area of space into a more positive area of space. This causes mental quickening and drive, not only to people of Earth but also to those in accompanying systems. The influence that is pushing us to explore space, is pushing others to become more deeply involved in exploration. This accounts for the increased activity of strange craft in our skies. At the current time this desire for self-expression is causing worldwide turmoil in nations and people. Everybody in masses and individually are demanding of each other greater recognition and more equal rights.

Because the top contrast of the Electromagnetic Density is Gender, this same long-term cycle and polarity shift is causing gender confusion and a shift of gender expression. Our

gender-oriented bodies that were in tune with the long-term negative bandwidth of Space that our Solar System was passing through, began to feel the pressure of gender shift of our Space environment. The predominating social laws concerning sex behavior fell by the wayside under the changing influence, and sex-oriented, four-letter words appeared in public print along with more revealing pictures of sex attractions and actions. The ultimate of this trend was unlimited pornography for sale. Along with porno was a great upsurge in homosexuality and lesbianism. Their demand for recognition and equal rights was encouraged even further into the unnatural by surgeons who assisted to create the opposite gender replicas of sex organs and to supply opposite gender sex hormones to alter the contrast that was natural to the original gender orientation of the body.

The changing influence also caused the female to become less passive while giving attention to what was previously male pursuits and male authority. The male, meantime, gradually became more passive to accept female pursuits and traits. Many are now looking more deeply into the unseen. The disturbances of all this will neutralize and pass away as it came. The physical is not boss over Mind even though its emotions have deep influence. When the mental attitude stabilizes to fit the more positive density, that which the 4th density of Space offers will far override the ills encountered enroute, and the mentality of the 4th density level will reveal truths that now are mysteries.

The example of tomorrow's science is in our midst in biological bodies that are reactors within Living Light and Space. Our current quickening, when allowed the freedom from past limiting scientific guidelines, will reveal what needs to be revealed if we are to develop energy without fuel and thus qualify to become scientists who explore Space with Natural, sophisticated Space Craft.