

Chapter 16

Light and Dark is also Hot and Cold

It is well publicized that planets far removed from the Sun, develop more heat on their own than they receive from the Sun by so called heat radiation. If such is true of planets, it is even more so of biological bodies which in Cosmic terms are more personal and closer in alignment to Creative Spirit which is the most personal of all since all else relates to It for Cause and for individuality. A good example of a self-contained heating unit in a very trying situation is that of the birth and survival of baby harp seals. They are born into this life in a -30°F . temperature on an ice floe, unprotected from chilling wind, deserted for a time by their mother, without food or shelter; yet, they survive in perfect comfort without a shiver, in spite of the fact that they do not have a layer of blubber and that their wet fur affords little if any protection from extremely raw elements. January 15, 1977, *Science News* submits a lengthy article concerning broad research on how the baby harp seal manages to keep warm. Their search was for certain body fats and cell structure which would supply rapid heating to the baby seal. The search though, like so many others, does not give conclusive answers. The harp seal study is only one of many such studies. Arctic and Antarctic life has been thoroughly investigated for internal means of manufacturing heat or

anti-freeze solutions that make survival possible under trying conditions. Research on specific species always reveals that each has a slightly different arrangement of life and heat support; thus the search is endless as they do not have a common base within which each finding may have a reference. The lack of a common reference is man-made because scientific eyes are glued to an effect which cannot see Cause, even though their formulas designate outside cause, as does $E = MC^2$. This formula relates energies of space to energy in atoms and naturally, to their heat potential. A free current flow is caused by eliminating magnetism from a super-conductor by the application of extreme cold upon an elliptical shape of mostly diamagnetic materials.

Simplicity lies away from intermingled experiences, local findings and local interpretations. Thus we again need to mentally back up toward Infinity and see man's experiences and the warm and cold-blooded animal life with their different characteristics as outlined previously.

With positive-negative Electromagnetic Light as a driver of atoms and biology, it takes very little imagination to expand man-made dissimilar metal junctions (thermocouples) that produce heat or cold with forward or reverse flows of electrical current, to be the cause of heat in animal bodies. Biological bodies contain the same basic elements that are present in thermocouples. When we assume that man-made thermocouples are copies of Nature, we, by adopting Cosmic drive, see heat and cold possible in any situation and especially in Living bodies. Mother Earth, with her very dense center, less dense mantle and radiating cupped Van Allen belts, like all planets makes most of her own heat like the Sun makes hers, but at a different level. Mother Earth is a thermocouple in more ways than one. Even her surface is of positive-negative balance. Ocean currents turn to the right north of the equator and to the left south of the equator. Large areas of water that spiral to the right are a few degrees warmer than masses of water that turn to the left. In atmosphere, as is readily detectable in weather satellite photos, the warm high spirals turn to the right

and the cool low spirals turn to the left. The South Pole is colder than the North Pole, and in jungles south of the equator one finds more climbing vines than in the north and, as a rule, they spiral upward opposite to that of vines north of the equator. Earth with life support on its surface, has an energy equator at that surface. A tree thrives in two polarities of the surface of Earth. There is a tree above the surface and an upside down tree (root system) below the surface. Many lesser plants have their fruit underground while the top of the plant and its blossoms are above the surface. The fruit of a tree above the surface, grows between where the flower was and the twig that supported the flower. The tree is upgraded Earth polarity; the fruit is upgraded tree polarity.

Animal life also is divided in the same manner by habitat. The bird has white meat on its chest which, though not a muscle, plays an important part in the energy factor necessary for quick flight. It lives and flies nearly exclusively in the quick, positive polarity above the surface of Earth. Positive balance birds have a high body temperature. They though, have cold feet and thus a divided blood stream for their feet. The blood of a bird is as unique as is its mode of quick travel. The 4-chambered heart with a complete separation of arterial and venous blood is like that of mammals, but the aortic arch turns to the right, where it is to the left in mammals. The blood of birds has more red corpuscles per ounce than any mammal. This intensity is in line with a demand for high volumes of quick (positive) energy. These red corpuscles are elliptical, slightly biconvex, nucleated discs like those found in lower vertebrates, but unlike those of mammals. These red corpuscles in birds, for strong contrast, are larger than those of mammals and the white corpuscles also have different characteristics and functions. The temperature of birds is higher than in other biological systems, and the body along with its waste products is more acid in balance. Both heat and acid are positive factors. A bird that flies in atmosphere is of positive energy balance and its life support taps are balanced to intercept a positive balance energy that is present above the surface of the Earth. Marine life that lives below the surface

has a different odor than birds. A fish handling dock is easily distinguished by its smell as is a bird sanctuary or pen. Acid and alkaline are positive and negative respectively, so also is the environment above and below the surface of Earth.

Some plants grow faster at night while others grow well in daylight, and all of those factors relate directly to White and Dark Electromagnetic Light. Man's generated electricity is achieved by pumping of positive energy flux, while Nature's generated electricity can be either positive or negative balance flux and variable combinations of these. In all cases there is always Nature's teeter-totter that works with balanced loads. There must, though, be a differing activator for different life styles. A warm-blooded animal body needs a constant supply of food in order to maintain an Earth (negative) balance in the body and to keep that body highly functional. Cold-blooded animals *are* Earth balance and Earth polarity. Their vascular system receptors of energy and their tissue are of negative balance, and their needs for intake of food are correspondingly different from warm-blooded animal life. A cold-blooded serpent, frog and many others that breathe with lungs, can survive for long periods of time without food, with minor if any ill effects. Cold-blooded fish, like salmon that live below the surface of Earth, remain super strong while finishing their purpose in a wild venture back to their spawning ground which, in land miles, may be a wild 3,000 miles up the Yukon River, where 3,000 miles becomes as 10,000 miles actual distance when rapid current flow is considered. While their body was growing and developing, the food chain and its Life forces was a necessity. When fully developed and mature, the need for food does not exist for that extremely negative body. The salmon is a natural negative balance receptor of negative and positive drive without a constant supply of food. Where the bird is white acidic balance, the fish, with its dark mioglobin and dark blood mass along the spine is alkaline balance. Each in their balance are a tap of the same Light forces, but as in Gender balance, each represents a reactor of specific balance.

The torso of a fish does to a degree resemble the torso of a bird. This observation, though, is only superficial. Fish and birds are electrical opposites. Fish relate to the negative environment and birds to their positive environment. For one to have become the other would have required drastic changes.

All vascular systems have much in common. They circulate and deposit electrical charge, they pulsate outward and flow inward. Arteries are more round in shape than veins which are elliptical tubes. If pulsation ceases all other secondary energy functions cease. The three types of vascular systems that circulate blood, either warm or cold, are divisions of light and dark with a definite detectable balance of light and dark.

Figure 21-a depicts the vascular system of a mammal. The dark outline depicts two divided heart sections, one arterial and the other venous. The black dotted tubes depict the returning venous system and its direct path to the lungs. Following the lungs interchange and charge, the light tube remains separate until they reach capillaries, where the lung charge is deposited to tissue. The mammal heart and body as a living unit represents the highest form of biological Life on Earth. It also represents an equal balance of positive and negative light.

Figure 21-b depicts the vascular system of an amphibian, such as a frog, that is cold-blooded but breathes with lungs. The fact that the amphibia are cold-blooded, calls for a less-divided arterial-venous system. The heart is in part a mixing chamber, as it is not completely isolated as light and dark. The oxygen-charged blood upon leaving the lungs, passes by blood going to the lungs. It can be said that they divide by polarity to their respective attraction. The dark, oxygen-poor blood proceeds to the dark center, while the oxygen-rich blood follows the light to the capillaries.

Figure 21-c depicts the vascular system of a fish that breathes with gills instead of lungs. The heart is a two-chambered, through-flow valve and pump. This extreme difference shows that the fish that live entirely beneath the surface of Earth are strongly Earth-polarized and, as they take oxygen from water

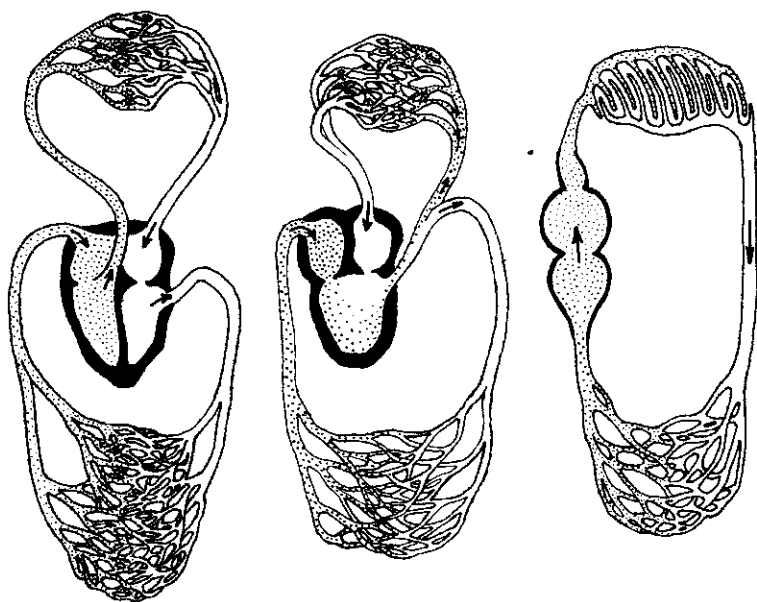


Fig. 21, a, b, c, THREE BASIC HEARTS

with gills, their cold vascular system is far more negative and venous than that of an amphibian with lungs. A fish's vascular system is the extreme opposite to that of a bird.

A developing embryo starts to pulsate early in its development. Its pulsing, crystalline blood stream activates the developing body step by step until it is developed to a state that can adopt breathing. When breathing starts, the new form adopts its Cosmic host and becomes physically an independent Life form. The light and dark contrasts of the mammal body is repeated in light and dark contrasts of muscle tissue which, even as the vascular systems, are living crystals of two contrasts. The pulsing blood stream is the initial activation of the tissue system. The muscle cells immersed in a flow of driving lines of Cosmic force, become a receptor of Cosmic Current parallel to that of the pulsing blood stream. Each pulse is a compressing and decompressing, which is a continually changing strain and

relax, not unlike a piezoelectric device that changes polarity each time a compression is released and the resilient device expands to a normal state. Muscle tissue likewise is an organic piezoelectric receptor that accumulates forces passing through it by applied tensions and strains. They, however, cannot thus perform unless they are first charged by the Life-giving pulsing blood stream which too, in piezoelectric fashion, is a positive and negative teeter-totter. One polarity which pulses, activates the arteries and heart chambers; the other, which is a decompressing action, acts upon the elliptical veins and the dark side of the heart and lungs.

Did you ever try, while standing, to hold an arm out horizontally from the shoulders for a few minutes? If not, try it and note how quickly the lack of motion creates fatigue. That same arm can move all day in work and still be strong in the evening, but it cannot hold still and remain strong. Even holding a dead weight without moving or rest dissipates tissue force. Observe a professional weight-lifter in action. The physical effort is a co-ordinated, continual effort and any pause of even a few seconds duration is a sign of defeat. First the professional weight-lifter gives mental attention to the project at hand. When the body is mentally charged to a high degree of readiness, the physical lift as a co-ordinated series of tensions and strains, becomes temporarily as great as the mental depiction. Any loss of faith or any pause detracts from the strength. Also, the ability to hold the weight suspended above the head is as hard as the lift; if this hold be prolonged, it becomes too weighty to maintain.

The microscopic cell organism and its cilia appendages are no different than mankind's arm. A cilium is a universal tool of mobility as is a physical appendage of us. They are living Crystalline appendages that perform, in their state and for their purpose, as naturally as Solar Systems function in their state. What they have in common is drive. The same drive that puts energy in food or in fuel gives direct energy to a living organism. We as a biological body, tap this drive by the aid of Cosmic Science not designed by us. We, too, as secondary

creators can tap Cosmic forces for commercial and social use as soon as we, in total faith and knowing, set our stage to do so. Mind which is based in the Other Density is far denser than the brain and far more free to know independently. Our Mind cannot be imprisoned, but our brain can.

As surely as every body from atom to macrocosm forms a field surrounding it, only because they disrupt the lines of force passing through the body, so surely also is our brain activated to become what it is. When the brain becomes deactivated by the cessation of pulse, that brain starts to dissolve. The 'I' of us is not electromagnetic, it is though deeply involved in this experience. The depth of our experience depends on our personal balance between brain and Mind, thus in a sense, between Mind and matter. In biology, Mind functions in both warm and cold-blooded bodies. All heat, Celestial and biological is tapped heat. Though the body is warmed by Sun heat, it also taps much of its own heat by tensions and strains, and regulates its own temperature. The potential for either heat or cold is always available for any biological body born into the contrasting streams of Electromagnetic Light. Atoms that bridge the gap between Light and mass are also born. Electrically, they too, are gender opposites as well as positive and negative opposites. In fact, research into the sex life of any biological body is a local study of effects created within Living Light.